

STAINLESS STEEL SPECIALISTS

Metalco Expands to Stainless Steel



METALCO EXTRUSIONS
GLOBAL LLP

Erstwhile METAL EXTRUSIONS

✉ ss@metalcoglobal.com

🌐 www.metalcoglobal.com



METALCO EXTRUSIONS GLOBAL LLP

STAINLESS STEEL SPECIALIST

(ERSTWHILE METAL EXTRUSIONS)

IMPORTER | EXPORTER | WHOLESALERS



PRODUCTS

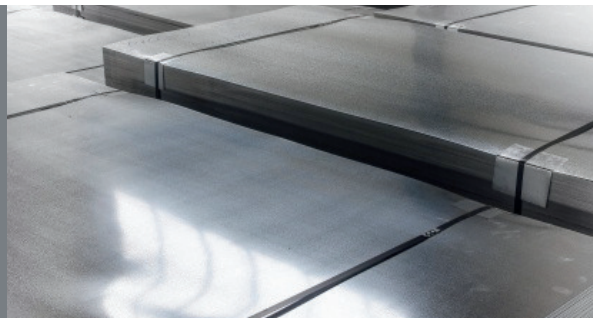
- STAINLESS STEEL SHEETS
- STAINLESS STEEL PLATES
- STAINLESS STEEL COILS
- STAINLESS STEEL CHEQUERED SHEETS

STOCKIST OF:

202, 304, 3042B, 316, 316L, 409, 409L, 430, 430BA

Address

No. 46, Sundar Industrial
Compound, New Timbaryard
Layout, Mysore Road,
Bengaluru - 560026



COMPANY PROFILE

INTRODUCTION :

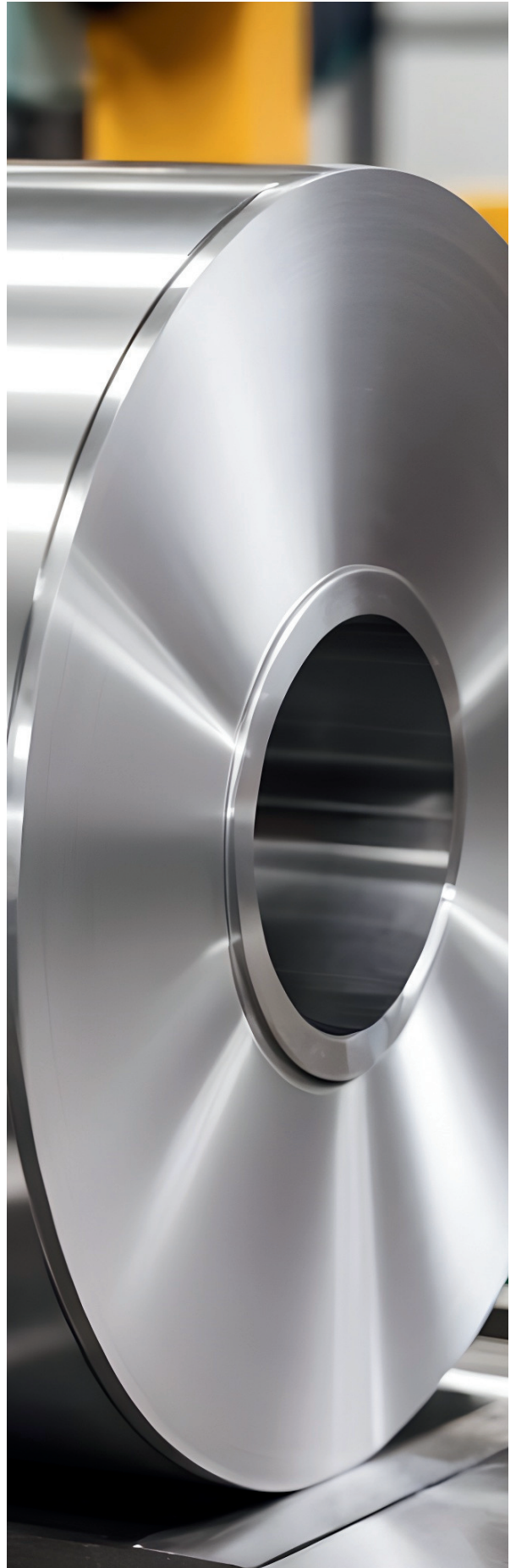
With over 35 years of expertise in the aluminium industry, we have now expanded into **Stainless Steel products**, establishing ourselves as a long-established and trusted supplier with a strong presence across six branches in India, including Bangalore, Chennai, Ahmedabad, and Pune.

With decades of industry expertise, we have built a reputation for delivering high-quality stainless steel materials and outstanding customer service to diverse industries. Our wide product range includes **Stainless Steel Sheets, Plates, Coils, Chequered Sheets** all readily available in various grades and specifications.

At the core of our business is a skilled and dedicated team, supported by modern facilities and a strong supply chain. With efficient inventory management and strict quality checks, we ensure on-time deliveries and consistent quality, earning the long-term trust of our valued customers.

At the core of our business is a skilled and dedicated team, supported by modern facilities and a strong supply chain. With efficient inventory management and strict quality checks, we ensure on-time deliveries and consistent quality, earning the long-term trust of our valued customers.

We focus on innovation and putting our customers first. We are dedicated to growing worldwide and making sure every order meets the highest standards.



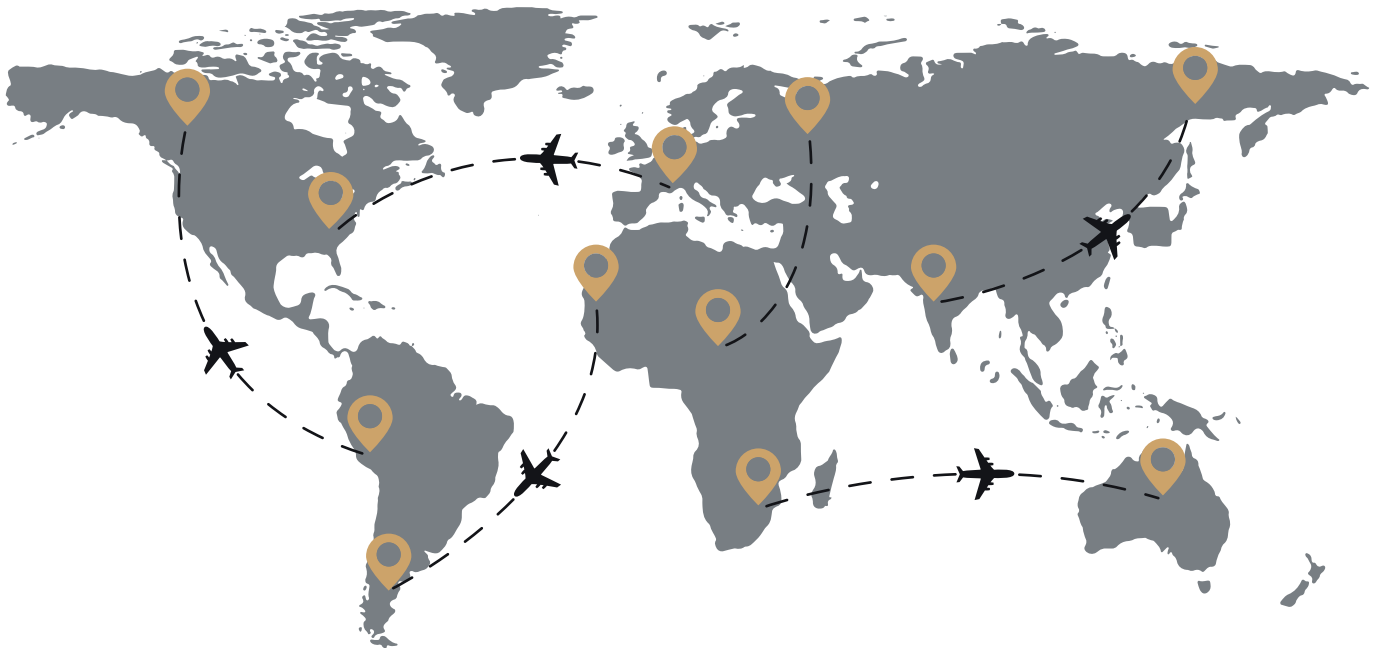
VISION

The company wants to achieve maximum customer satisfaction and goodwill in the market by serving its customers in the best way possible.

MISSION

To focus on market expansion and to gain maximum global market share.

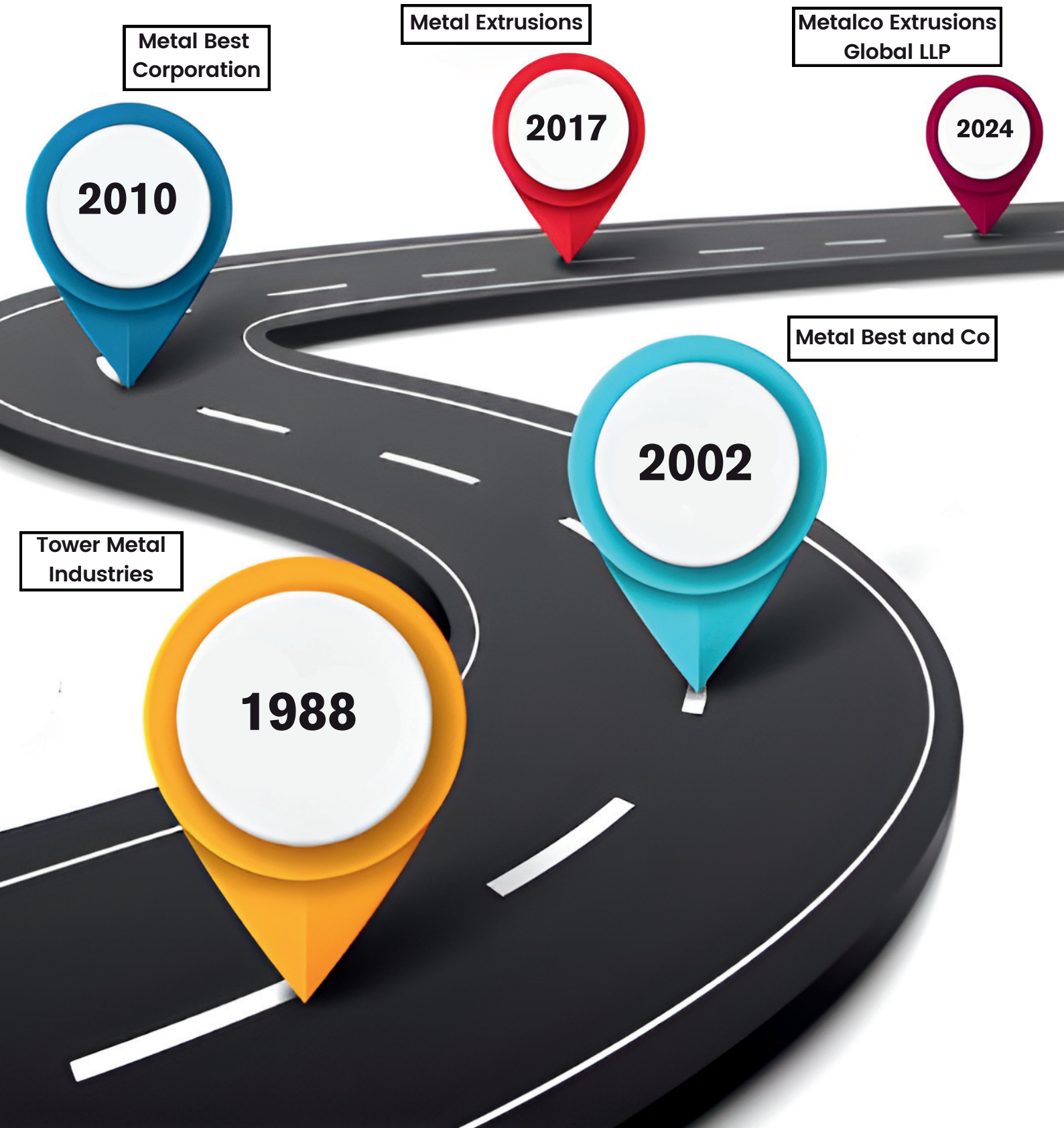
EXPANDING HORIZONS ONE EXPORT AT A TIME



We are Excited to announce that we have expanded our services to include import and export operations in the UAE, Bahrain, Oman, Qatar, Thailand, Indonesia, Malaysia, Sri Lanka, and Bangladesh.

We continue to explore new territories and broaden our reach!

BUSINESS DEVELOPMENT ROADMAP



EXHIBITIONS

Attended by Metalco Extrusions Global LLP



DUBAI AIRSHOW 2023

- DWC, November 2023

DEFENCE AND SECURITY 2023

- IMPACT, Muang Thong Thani, Thailand 6-9 November 2023

MSME DEFENCE 2023

- International Exhibition Centre - Pune

ELASIA INTERNATIONAL EXHIBITION 2024

- 24th BIEC, May 2024

RAW MAT INDIA 2024

- 2024 CODISSIA Trade Fair Complex, Coimbatore

WINDERGY INDIA 2024

- Chennai Trade Centre, Chennai, India

AERO INDIA 2025

- 10 to 14 February 2025 Air Force Station, Yelahanka, Bengaluru, India

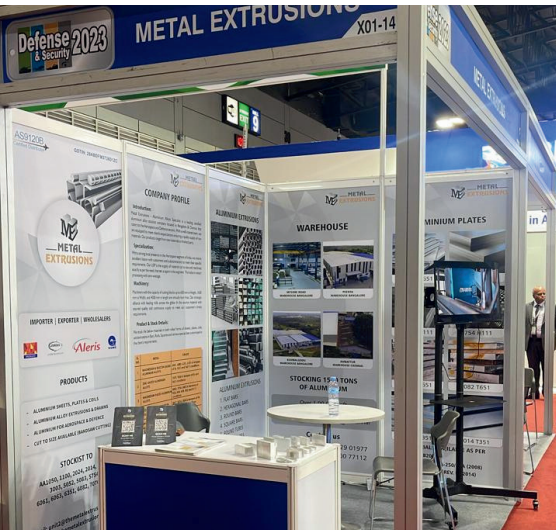
AERODEF INDIA MANUFACTURING EXPO

- May 1st, 2nd, and 3rd, 2025 Yashobhoomi, IICC, Dwarka New Delhi, India.

SUBCON 2025

- May 14th, 15th, and 16th, 2025. CODISSIA Trade Fair Complex, Coimbatore

And Even more to come





OUR LOCATION

We have six branches across India.

UNIT - 1

HEAD OFFICE:

Sundar Industrial Compound,
Mysore Road, Bengaluru - 560026
Mob: 9902011313/9900305648

UNIT - 2

PEENYA:

3rd Stage, Peenya Industrial Area,
Bengaluru - 560058
Mob: 9686198234/9880077112

UNIT - 3

KUMBALGUDU:

Ramapura village,
Kumbalgotu, Bengaluru - 560074
Mob: 9902901977/9740070733

UNIT - 4

CHENNAI:

SIDCO Industrial Estate,
Ambattur, Chennai - 600098
Mob: 7411331838/9880077112

UNIT - 5

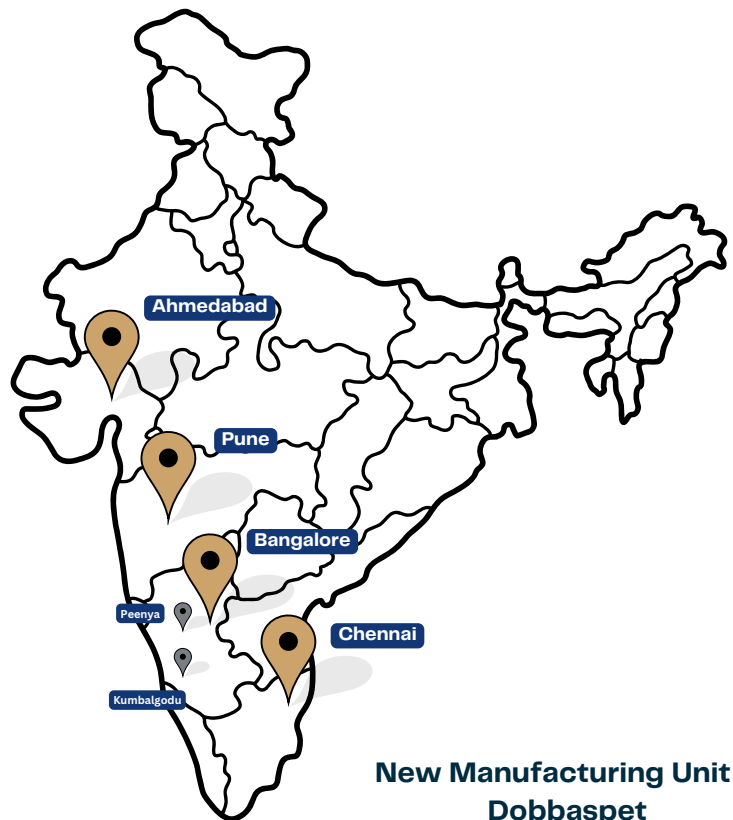
AHMEDABAD:

Brahmani Industrial Park Dhamatvan
Ahmedabad - 382435
Mob: 8197792794/8884820148

UNIT - 6

PUNE:

PAP-B-86, Varale, Chakan MIDC Phase II,
Khed, Pune, Maharashtra - 410501
Mob: 94278 64963/9970022228



**New Manufacturing Unit at
Dobbaspeth**
Under Development

Bangalore, Chennai, Ahmedabad & Pune

SPECIFICATIONS

Surface Finish		Type of Process Route	Remarks	Applications
ASTM A480	EN 10088-2			
No 1	1D	Hot Rolled annealed and pickled	This is a dull non reflective finish Not as smooth as 2D or 2B	Pipes tubing chemical tank general fabrication
No 2D	2D	Cold Rolled annealed and pickled	Surface is not as smooth as 2B or BA	Deep drawn utensils heat exchanger automotive exhaust systems
No.2B	2B	Cold Rolled annealed pickled and skin passed	Smoother than 2D	Food and beverage industry kitchen utensils medical equipment construction material dairy equipment
BA	2R	Cold Rolled bright annealed	A smooth bright reflective finish produced in inert atmosphere annealing	Decorative usage kitchen utensils electric equipment building construction
No 3	--	Cold Rolled annealed pickled and polished with 100 to 120 grit	Ground unidirectional finish This is not highly reflective	kitchen and restaurant equipment food and beverage industry and dairy equipment medical equipment architectural structures building construction
No 4	--	Cold Rolled annealed pickled and polished with 150 to 180 grit	Ground unidirectional finish generally smoother then No3 finish	Kitchen and restaurant equipment food and beverage industry and dairy equipment medical equipment architectural applications building construction
2J	--	Grinding 2B finish with suitable abrasive belt followed by brushing in the	No4 finish with brush polish	External panels of metro/rail coaches lift interiors bus shelters decorative panels architectural applications
Scotch Brite	--	Polishing with rolls made out of scotch brite material	Uni-directional finish is produced by polishing with scotch brite rolls This finish is more	Architectural purposes railway cabins elevator interiors paneling kitchen appliances
Hot Rolled Chequered*	1M Patterned	Chequered Pattern produced in hot strip mill followed by annealing produced in hot strip mill followed by annealing and pickling	Hot Rolled Chequered Sheets/Plates having raised patterns imparted by hot Sheets/Plates having raised patterns imparted by hot rolling mill rolls on one surface of the coil	Industrial walkways staircase & railway coaches flooring & footrest application

Chequered Pattern Conforms to IS 305 (Pattern 1C), Pattern T as per DIN 59220

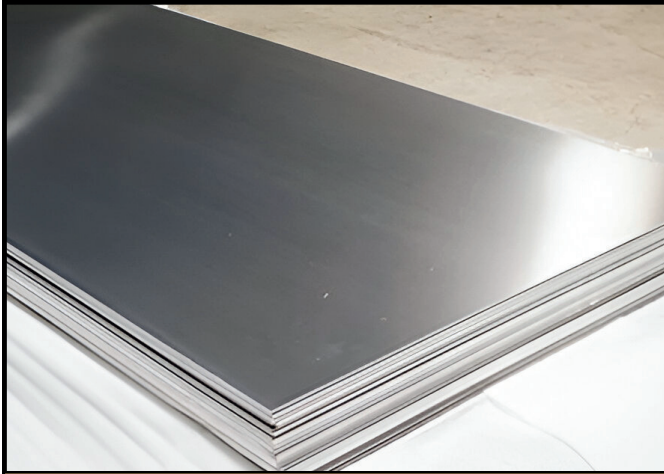
SPECIFICATIONS

Chemical Composition								
	JSL Designatio n/ Grade	%C (Max)	%Mn (Max)	%P (Max)	%S (Max)	%Si (Max)	%Cr	%Ni
Austenitic Cr-Mn	J-201	0.15	5.5-7.5	0.06	0.015	0.75	16.00-18.00	3.5-5.5
	J-201L	0.03	5.5-7.5	0.045	0.015	0.75	16.00-18.00	3.5-5.5
	J-201LN	0.03	6.4-7.5	0.045	0.015	0.75	16.00-17.50	4.00-5.00
	J-202	0.15	7.5-10.0	0.06	0.015	0.75	17.00-19.00	4.00-6.00
	J-204Cu	0.1	6.5-9.0	0.07	0.015	0.75	16.00-17.00	1.50-3.50
	JSLAUS(J1)	0.08	6.0-8.0	0.07	0.015	0.75	16.00-17.50	4.00-6.00
	J-4	0.12	8.50-10.0	0.08	0.015	0.75	15.00-16.00	1.00-2.00
	JSL U DD	0.12	9.00-10.5	0.08	0.015	0.75	15.00-16.00	1.00-2.00
	JSL U SD-M	0.14	9.00-11.0	0.1	0.015	0.75	14.00-15.00	0.60-0.95
	JT	0.13	9.00-11.0	0.1	0.015	0.75	14.00-15.00	0.50-0.95
Austenitic Cr-Ni	J-301	0.15	2.00	0.045	0.030	1.00	16.00-18.00	6.00-8.00
	J-301L	0.03	2.00	0.045	0.030	1.00	16.00-18.00	6.00-8.00
	J-301LN	0.03	2.00	0.045	0.030	1.00	16.00-18.00	6.00-8.00
	J-304	0.08	2.00	0.045	0.030	0.75	18.00-20.00	8.00-11.00
	J-304H	0.04-0.10	2.00	0.045	0.030	0.75	18.00-20.00	8.00-10.50
	J-304L	0.03	2.00	0.045	0.030	0.75	18.00-20.00	8.00-12.00
	J-304LN	0.03	2.00	0.045	0.030	0.75	18.00-20.00	8.00-12.00
	J-304N	0.08	2.00	0.045	0.030	0.75	18.00-20.00	8.00-10.50
	J-30815	0.05-0.10	0.80	0.04	0.030	1.40-2.00	20.00-22.00	10.00-12.00
	J-309S	0.08	2.00	0.045	0.030	0.75	22.00-24.00	12.00-15.00
	J-310S	0.08	2.00	0.045	0.030	1.50	24.00-26.00	19.00-22.00
	J-316	0.08	2.00	0.045	0.030	0.75	16.00-18.00	10.00-14.00
	J-316L	0.03	2.00	0.045	0.030	0.75	16.00-18.00	10.00-14.00
	J-316LN	0.03	2.00	0.045	0.030	0.75	16.00-18.00	10.00-14.00
	J-316Ti	0.08	2.00	0.045	0.030	0.75	16.00-18.00	10.00-14.00
	J-317	0.08	2.00	0.045	0.030	0.75	18.00-20.00	11.00-15.00
	J-317L	0.03	2.00	0.045	0.030	0.75	18.00-20.00	11.00-15.00
	J-317LN	0.03	2.00	0.045	0.030	0.75	18.00-20.00	11.00-15.00
	J-31727	0.03	1.00	0.03	0.030	1.00	17.50-19.00	14.50-16.50
	J-321	0.08	2.00	0.045	0.030	0.75	17.00-19.00	9.00-12.00
Martensitic	J-321H	0.04-0.10	2.00	0.045	0.030	0.75	17.00-19.00	9.00-12.00
	J-347	0.08	2.00	0.045	0.030	0.75	17.00-19.00	9.00-13.00
	J-904L	0.02	2.00	0.045	0.035	1.00	19.0-23.0	23.0-28.0
	J-410	0.08-0.15	1.00	0.04	0.030	1.00	11.50-13.50	0.75 max
	J-415	0.05	0.50-1.00	0.03	0.030	0.60	11.50-14.00	3.50-5.50
	J-420	0.15 min	1.00	0.04	0.030	1.00	12.00-14.00	0.75 max
	J-420J1	0.16-0.25	1.00	0.04	0.030	1.00	12.0-14.0	0.60
	J-420J2	0.26-0.40	1.00	0.04	0.030	1.00	12.0-14.0	0.60
	J-420MoV	0.45-0.55	1.00	0.04	0.015	1.00	14.0-15.0	-
	J-431	0.2	1.00	0.04	0.030	1.00	15.00-17.00	1.25-2.50
Ferritic	JBS	0.60-0.80	1.00	0.03	0.010	0.75	13.00-14.00	-
	J-405	0.08	1.00	0.04	0.030	1.00	11.50-14.50	0.60
	J-409L	0.03	1.00	0.04	0.020	1.00	10.50-11.70	0.50 max
	J-409Ni	0.03	1.00	0.04	0.030	1.00	10.5-11.7	0.50-1.00
	J-410S	0.08	1.00	0.04	0.030	1.00	11.50-13.50	0.60 max
	J-430	0.12	1.00	0.04	0.030	1.00	16.00-18.00	0.75 max
	J-432	0.025	1.00	0.04	0.030	1.00	17.0-20.0	-
	J-436	0.12	1.00	0.04	0.030	1.00	16.00-18.00	-
	J-436L	0.025	1.00	0.04	0.030	1.00	16.00-19.00	-
	J-439	0.03	1.00	0.04	0.030	1.00	17.00-19.00	0.50 max
	J-441	0.03	1.00	0.04	0.015	1.00	17.50-18.50	-
	J-444	0.025	1.00	0.04	0.030	1.00	17.5-19.5	1.00
	J-446	0.2	1.50	0.04	0.030	1.00	23.0-27.0	0.75
	J-430J1L	0.025	1.00	0.04	0.030	1.00	16.00-20.00	-
Ferritic + Martensitic								
	J-409M	0.03	0.8-1.5	0.04	0.015	1.00	10.50-12.50	0.30-1.50
Duplex (Austenitic + Ferritic)								
	J-2205	0.03	2.00	0.03	0.02	1.00	22.00-23.00	4.50-6.50
	J-2304	0.03	2.50	0.04	0.03	1.00	21.50-24.50	3.00-5.50
	J-32101	0.04	4.00-6.00	0.04	0.03	1.00	21.50-22.0	1.35-1.70
	J-32750	0.03	1.20	0.035	0.02	0.80	24.0-26.0	6.0-8.0
	J-32760	0.03	1.00	0.03	0.01	1.00	24.0-26.0	6.0-8.0

SPECIFICATIONS

	JSL Designation Grade	%Mo	N ppm (Max)	% Others	Yield Strength MPa (min)	Tensile Strength MPa (min)	% Elongation (min)	Hardness Rockwell B (max)
abcd	J201	-	2500	-	260	515	40	95
	J201L	-	2500	-	260	655	40	100
	J201LN	-	1000-2500	Cu = 1.0 Max	310	655	45	100
	J202	-	2500	-	260	620	40	100
	J204Cu	-	1000-2500	Cu = 2.0-4.0	310	650	40	100
	JSL AUS (J1)	-	500-1500	Cu = 1.5-2.0	275	600	40	95
	J4	-	1000-2000	Cu = 1.5-2.0	345	650	40	100
	JSL U DD	-	1000-2000	Cu = 1.75-2.50	345	650	30	100
	JSL U SD-M	-	1000-2000	Cu = 0.60-0.80	400	800	30	100
abcd	JT	-	1000-2000	Cu = 0.60-0.80	400	800	30	95
	J-301	-	1000	-	205	515	40	95
	J-301L	-	2000	-	220	550	45	100
	J-301LN	-	700-2000	-	240	550	45	100
	J-304	-	1000	-	205	515	40	95
	J-304H	-	1000	-	205	515	40	95
	J-304L	-	1000	-	170	485	40	92
	J-304N	-	1000-1600	-	240	550	30	92
	J-304LN	-	1000-1600	-	205	515	40	95
	J-30815	-	1400-2000	Ce=0.03-0.08	310	600	40	95
	J-309S	-	-	-	205	515	40	95
	J-310S	-	-	-	205	515	40	95
	J-316	2.00-3.00	1000	-	205	515	40	95
	J-316L	2.00-3.00	1000	-	170	485	40	92
	J-316LN	2.00-3.00	1000-1600	-	205	515	40	95
	J-316Ti	2.00-3.00	1000	Ti=5X(C+N) Min 0.70 Max	205	515	40	95
	J-317	3.00-4.00	1000	-	205	515	35	95
	J-317L	3.00-4.00	1000	-	205	515	40	96
	J-317LN	3.00-4.00	1000-2200	-	240	550	35	96
	J-31727	3.80-4.50	1500-2100	Cu=2.8-4.0	245	550	35	96
abcd	J-321	-	1000	Ti=5X(C+N) Min 0.70 Max	205	515	35	96
	J-321H	-	-	Ti=4X(C+N) Min 0.70 Max	205	515	40	96
	J-347	-	-	Nb=10X(C) Min 1.00 Max	205	515	40	92
	J-904L	4.00-5.00	1000	Cu=1.00-2.00	220	490	35	90
	J-410	-	-	-	205	450	20	88
	J-415	0.50-1.00	-	-	620	795	15	32HRC
	J-420	0.50 max	-	-	-	690	15	96
	J-420J1	-	-	-	225	520	18	97
	J-420J2	-	-	-	225	540	18	99
abcd	J-420MoV	0.50-0.80	-	V-0.10-0.20	-	850 max	12	100
	J-431	-	-	-	-	-	-	29HRC
	JBS	-	-	-	-	-	-	-
	J-405	-	-	Al=0.10-0.30	170	380	20	88
	J-409L	-	300	Ti=6X (C+N) Min 0.50 Max Nb = 0.17 max	170	380	20	88
	J-409Ni	-	300	Ti=6X(C+N) Min 0.75 Max	275	415	20	92
	J-410S	-	-	-	205	415	22	89
	J-430	-	-	-	205	450	22	89
	J-432	0.40-0.80	250	TVNb-8X(C+N) Min 0.80 Max	245	410	20	96
	J-436	0.75-1.25	-	Nb-5XC Min 0.70 Max	240	450	22	89
	J-436L	0.75-1.50	250	% Nb or & Ti or % combination = 8X (C+N) Min, 0.80 Max	245	410	20	96
	J-439	-	300	Ti = 0.20+4X (C+N) Min, 1.10 Max, Al = 015 Max	205	415	22	89
	J-441	-	-	Nb=3X% C+0.3 Min 1% Max. Ti=0.10-0.5%	250	430	18	88
	J-444	1.75-2.50	350	(Ti+Nb) 020+4(C+N) Min, 0.80 Max	275	415	20	96
	J-446	-	2500	-	275	515	20	96
	J-430J1L	-	250	Cu= 0.3-0.8 Nb 8X(C+N) Min 0.80 Max	205	390	22	90
Ferritic + Martensetic								
	J-409M	-	300	Ti=0.75 Max	275	450	20	90
Duplex (Austenitic + Ferritic)								
	J-2205	3.0-3.50	1400-2000	0	450	655	25	31HRC
	J-2304	0.05-0.60	500-2000	Cu 0.05-0.60	400	600	25	32HRC
	J-32101	0.10-0.80	2000-2500	Cu: 0.5 max	530	700	30	290 Brinell
	J-32750	3-5	2400-3200	Cu: 0.5 max	550	795	15	32 HRC
	J-32760	3-4	2000-3000	Cu: 0.5-1.0 W: 0.5-1.0	550	750	25	32 HRC

PRODUCT RANGE



STAINLESS STEEL SHEETS

- Width Size : 1000.00 to 1500mm
- Thickness : 0.20mm to 12.0 mm
- Grade : 202, 304, 304L, 304CK, 316, 316L, 409, 409M
- Finish : 28, Matt, Mirror

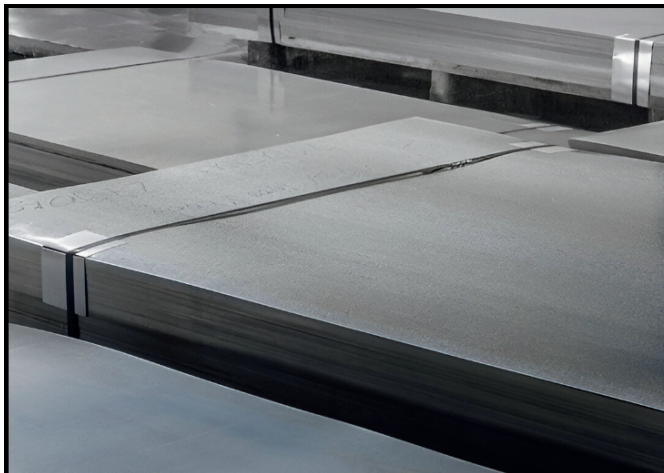
AISI 201, 202, 301, 304, 304L, 316, 316L, 317, 317L, 309, 310, 310S, 321, 409, 410, 420, 430, 409m, 436, 439 among others.



STAINLESS STEEL COILS

- Width Size : 1000.00 to 1500mm
- Thickness : 0.20mm to 12.0 mm
- Grade : 202, 304, 304L, 304CK, 316, 316L, 409, 409M
- Finish : 28, Matt, Mirror (up to 2.0mm)

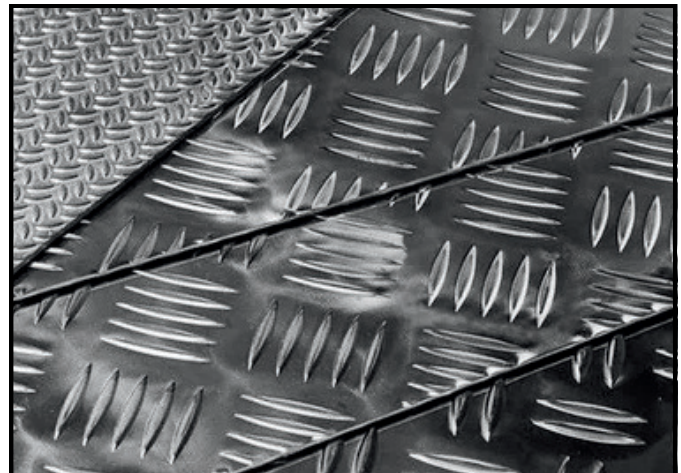
AISI 201, 202, 301, 304, 304L, 316, 316L, 317, 317L, 309, 310, 310S, 321, 409, 410, 420, 430, 409m, 436, 439 among others.



STAINLESS STEEL PLATES

- Width Size : 1000.00 to 1500mm
- Thickness : 5.00 mm to 100.00 mm
- Grade : 202, 304, 304L, 304L, 316, 316L, 409
- Finish : HR, N1

AISI 201, 202, 301, 304, 304L, 316, 316L, 317, 317L, 309, 310, 310S, 321, 409, 410, 420, 430, 409m, 436, 439 among others.

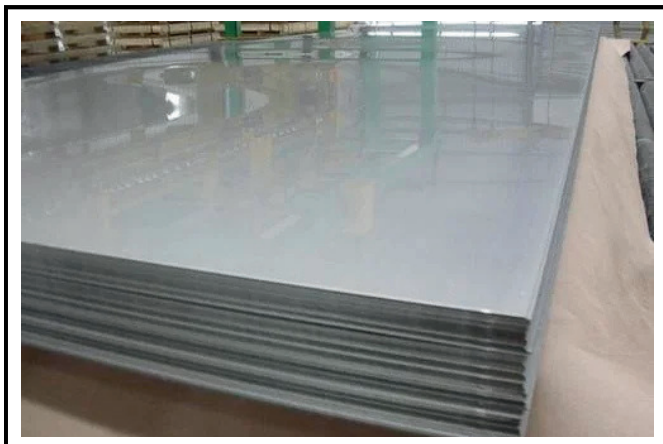


STAINLESS STEEL CHEQUERED SHEET

- Width Size : 1000.00 to 1500mm
- Thickness : 5.00 mm to 100.00 mm
- Grade : 202, 304, 304L, 316, 316L, 409
- Finish : HR, N1

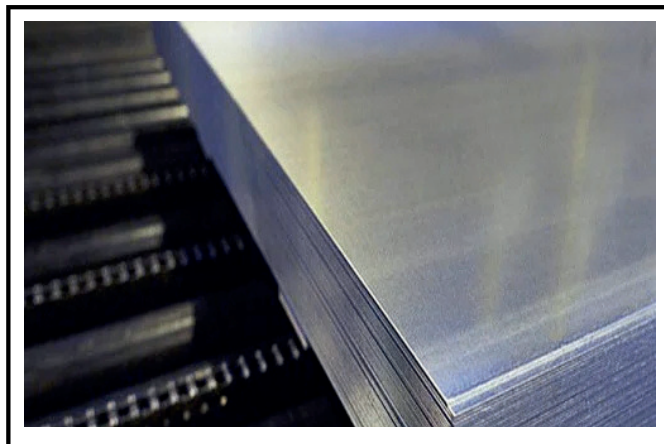
AISI 201, 202, 301, 304H, 317, 317L, 309, 310, 310S, 321, 410, 420, 430, 409M, 436, 439

STAINLESS STEEL SHEETS



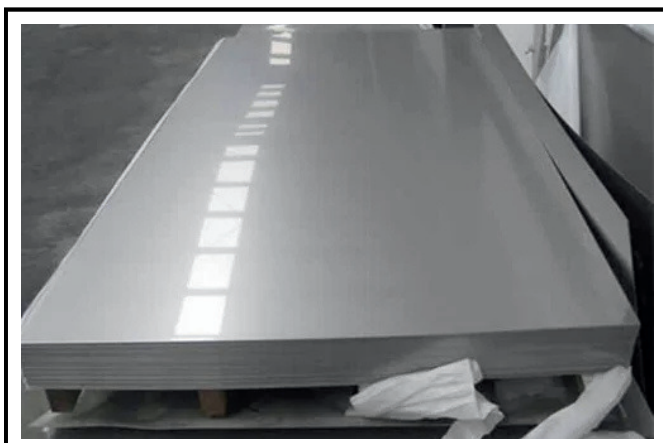
202 Stainless Steel Sheets

Metalco Extrusions Global LLP



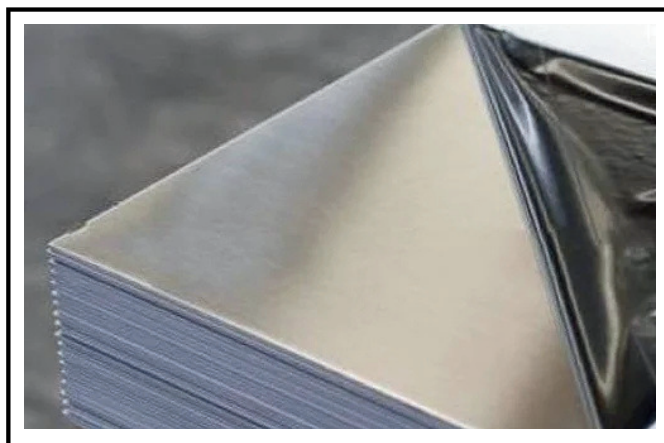
301 Stainless Steel Sheets

Metalco Extrusions Global LLP



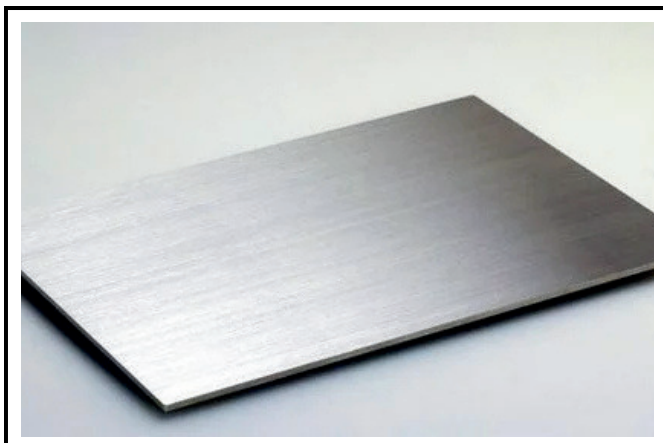
304 Stainless Steel Sheets

Metalco Extrusions Global LLP



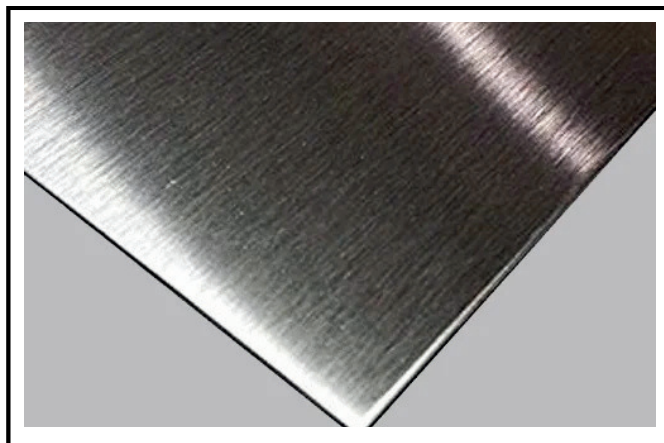
304L Stainless Steel Sheets

Metalco Extrusions Global LLP



316 Stainless Steel Sheets

Metalco Extrusions Global LLP



316L Stainless Steel Sheets

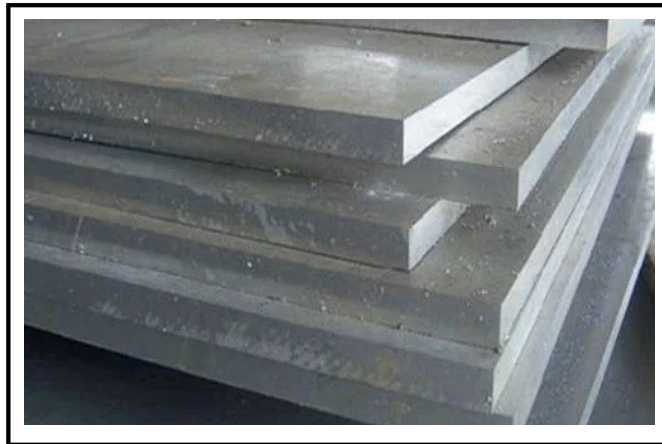
Metalco Extrusions Global LLP

STAINLESS STEEL PLATE



202 Stainless Steel Plate

Metalco Extrusions Global LLP



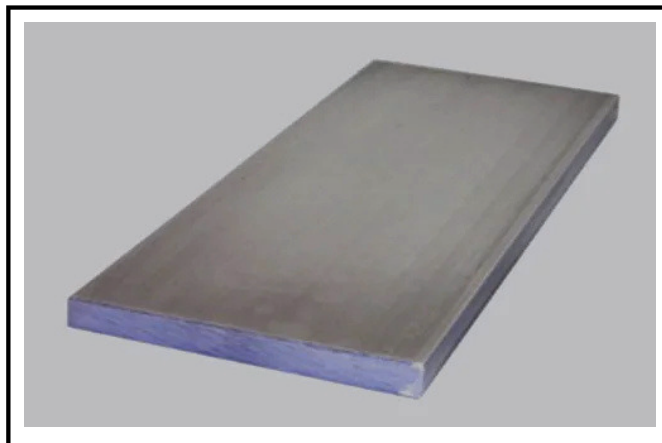
304 Stainless Steel Plate

Metalco Extrusions Global LLP



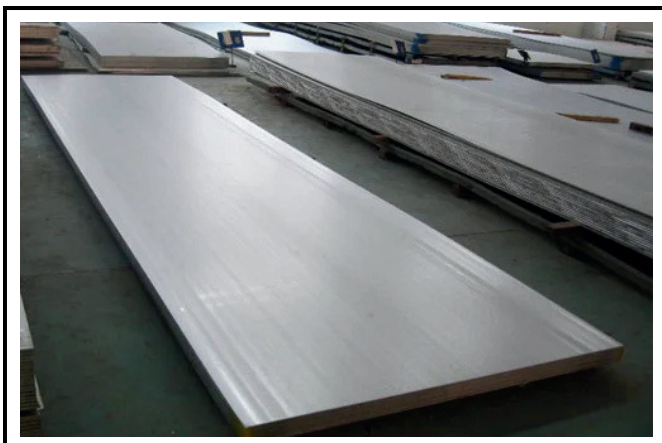
304L Stainless Steel Plate

Metalco Extrusions Global LLP



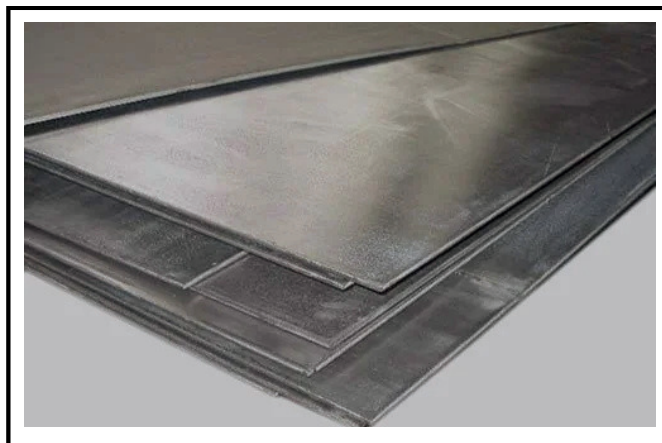
316 Stainless Steel Plate

Metalco Extrusions Global LLP



316L Stainless Steel plate

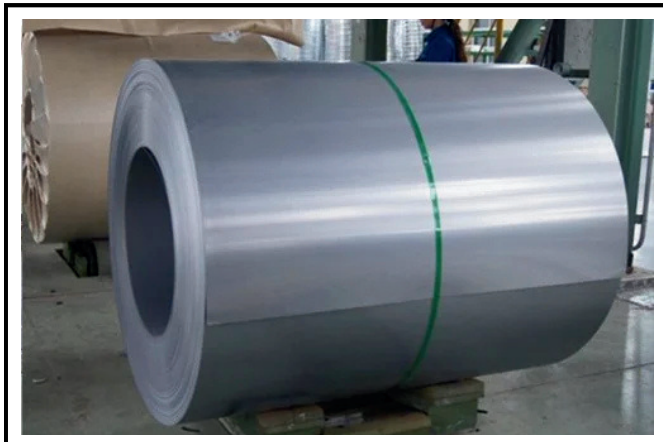
Metalco Extrusions Global LLP



310 Stainless Steel Plate

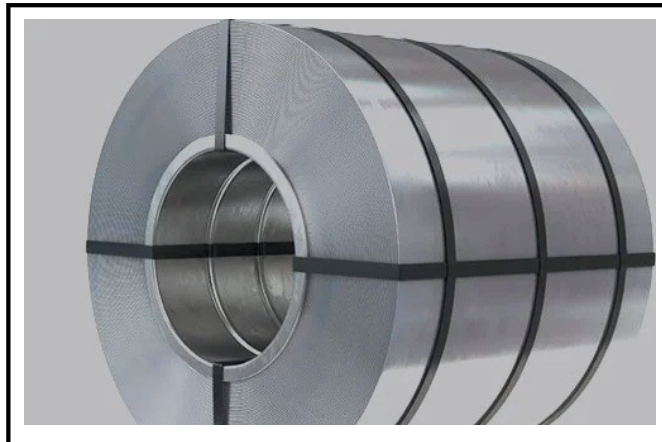
Metalco Extrusions Global LLP

STAINLESS STEEL COIL



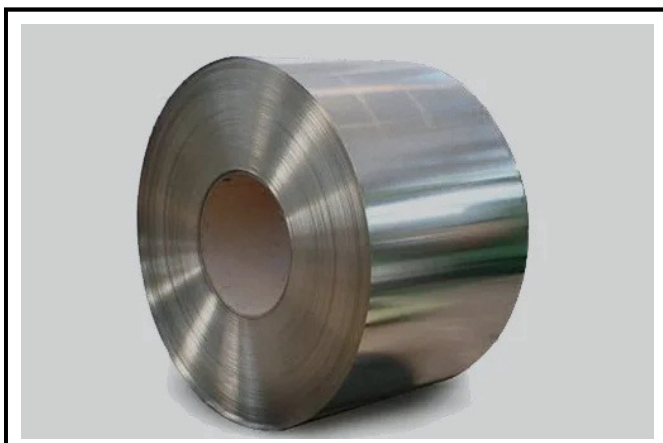
202 Stainless Steel Coil

Metalco Extrusions Global LLP



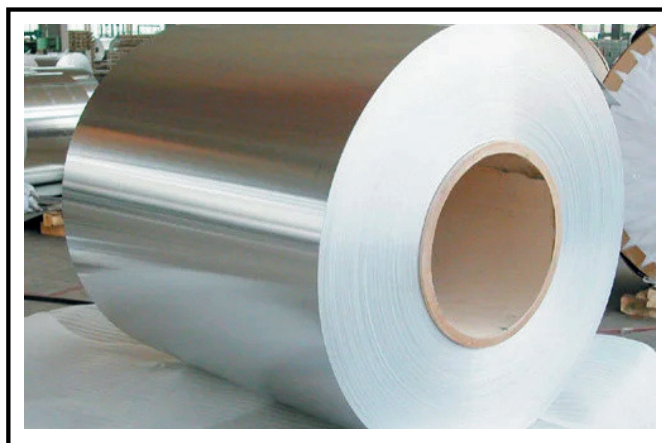
304 Stainless Steel Coil

Metalco Extrusions Global LLP



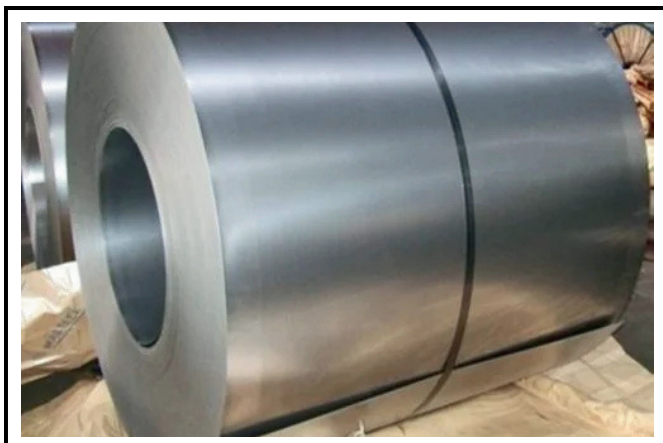
316 Stainless Steel Coil

Metalco Extrusions Global LLP



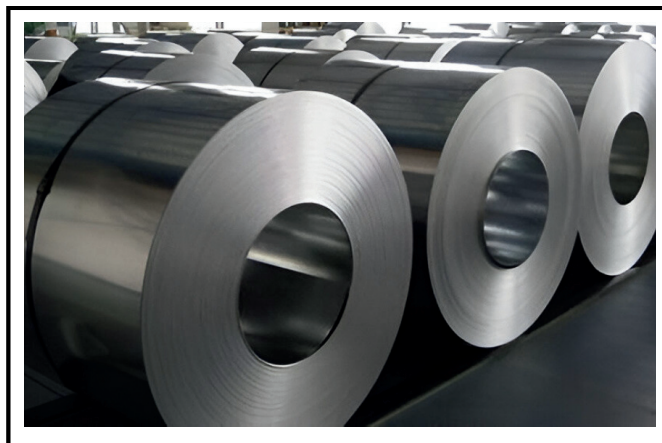
316L Stainless Steel Coil

Metalco Extrusions Global LLP



304 Stainless Steel Coil

Metalco Extrusions Global LLP



430 Stainless Steel Coil

Metalco Extrusions Global LLP

Thank You

Scan For All Our Units



HEAD OFFICE

NO.46, Sundar Industrial Compound, New Timber Yard Layout, Mysore Road,
Bengaluru - 560026



Telephone

080-26744727



Website

www.metalcoglobal.com